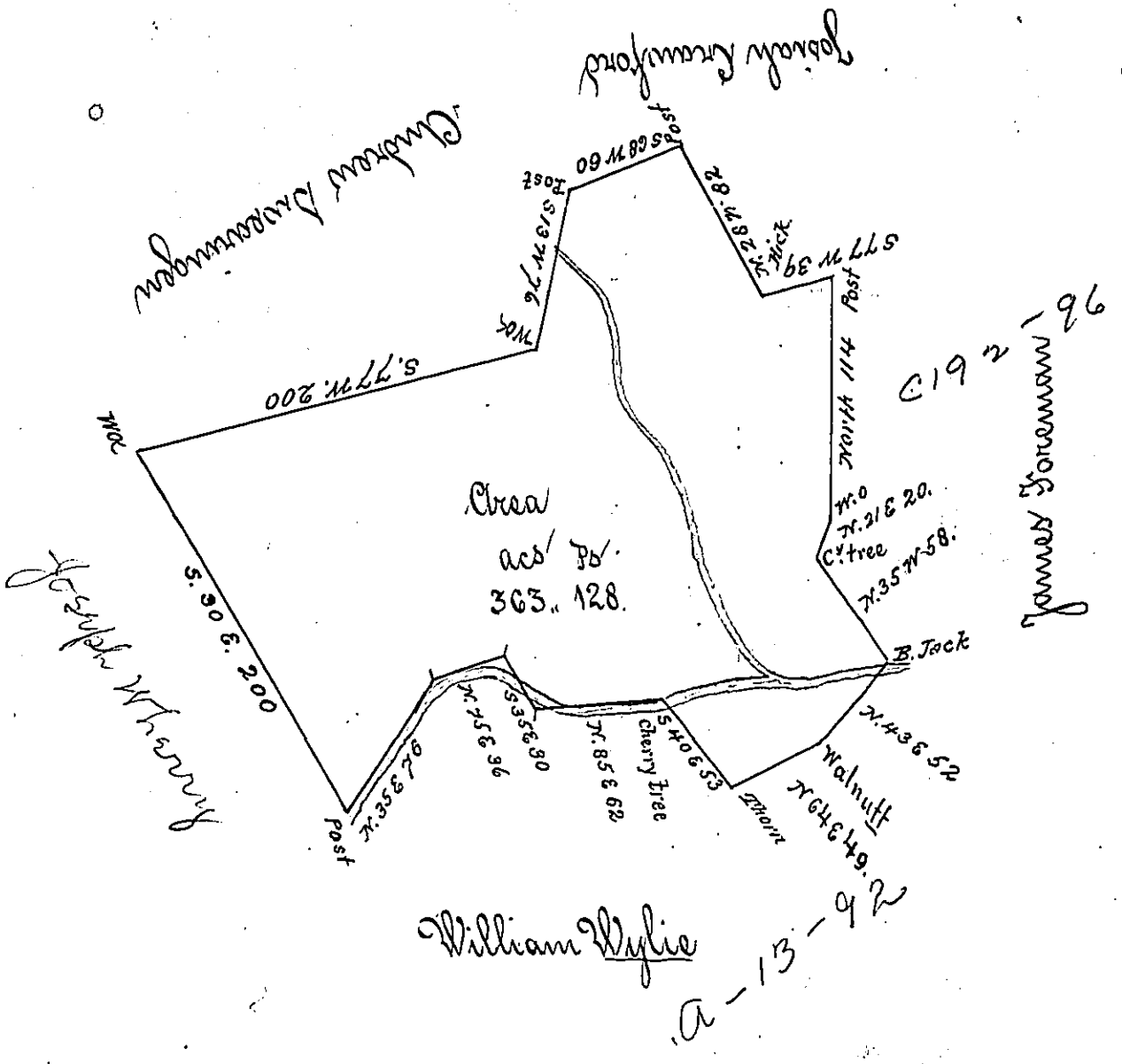


112
P14-374
1/114



The above is a draught of a Tract of Land lying upon the waters of Charlevoix Creek Washington County Called, Mount Holy Containing three Hundred and sixty three Acres and One Hundred & twenty Eight perches with the usual allowance Surveyed March 2^d 1788. In pursuance of a Warrant Granted William Wallace for 200 Acres dated March 16th 1786.

(gone) Wm Lukens Esq^r }
Surveyor Genl }

Bresley Nevill }
Matthew Ritchie } Wks

IN TESTIMONY that the above is a copy of the original remaining on file in the Department of Internal Affairs of Pennsylvania, made conformably to an Act of Assembly approved the 16th day of February, 1833, I have hereunto set my Hand and caused the Seal of said Department to be affixed at Harrisburg, this Seventh day of July 1903.

Loise P. Brown
Secretary of Internal Affairs.